

## What is Palliative Care?

Palliative care is the holistic care given to someone who is living with a life limiting or terminal disease. It enables patients to live life as fully and comfortably as is possible during this phase of their illness. Often at this time the needs of the patient and their families are greater, and so an emphasis on care and support are needed. Palliative care enables physical, spiritual and emotional support to be given to the patient and their friends and family journeying with them.

## What is Hospice Care?

Ipswich Hospice model of care puts the person and family at the centre of the care planning team. We endeavour to walk alongside you on your journey and provide as much comfort and support that you and your family need. We are guided by the choices and wishes of the guest and family; and we do all we can to make your time with us comfortable, safe and calm.



## Ipswich Hospice Care Ltd.

ABN 63 563 946 327

Ipswich Hospice Care acknowledges the Jagera, Yuggera and Ugarapul people, the Traditional Custodians of the land, and pays respect to Elders past, present and emerging.

☎ 07 3812 0063

Fax: 07 3812 0232

✉ [information@ipswichhospice.org.au](mailto:information@ipswichhospice.org.au)

🌐 [www.ipswichhospice.org.au](http://www.ipswichhospice.org.au)

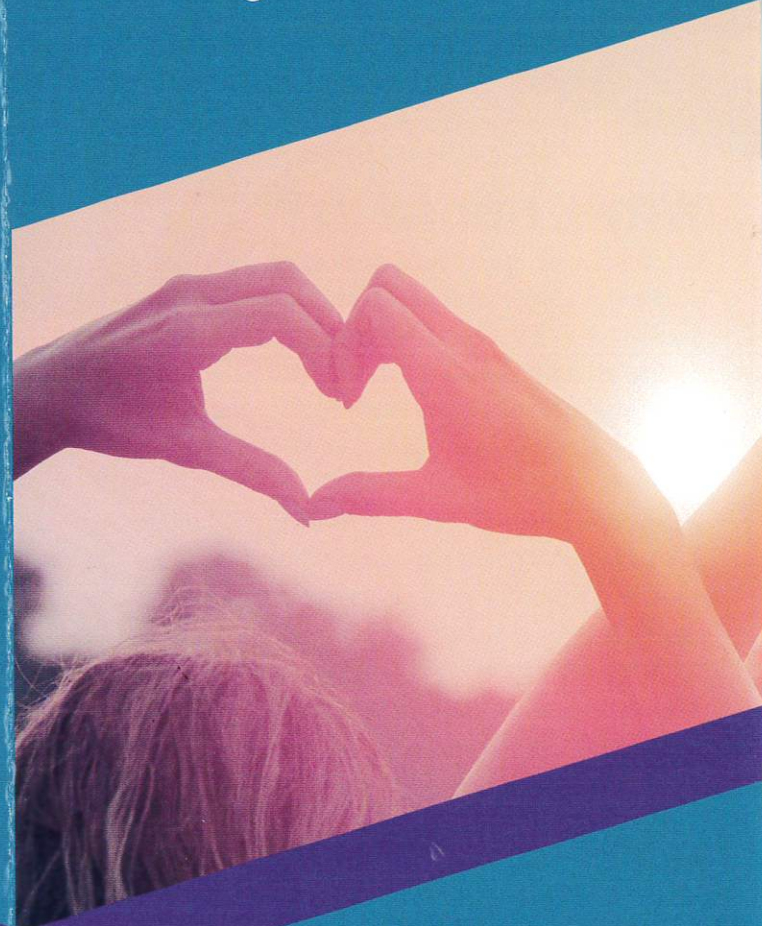
📍 37 Chermside Rd  
Eastern Heights, QLD 4305

Contact Hours  
8:00am - 4:00pm

Help us continue to care...  
Leave a Legacy Gift in your Will for  
Ipswich Hospice Care

## Ipswich Hospice Inpatient Service

*"A partnership of skilled care  
& loving kindness"*



Ipswich  
**Hospice**  
Care



## Why Choose Us?

Our mission to provide dignified and compassionate end of life care in a peaceful, home-like environment. The care in our facility is overseen by our Nurse Practitioner and team of Registered Nurses who work closely in partnership with the patient, their family and GP.

Each guest room is fitted with a private bathroom (including sufficient equipment for easy use), a spacious balcony and personal comforts to meet the individual needs of each guest. A dedicated family room is also available for visitors to spend time with their loved one in a comfortable and homely space.

Each guest room features:

- o Television (with Netflix access)
- o Refrigerator
- o Internet and phone access

In-patient services are overseen by the Nurse Unit Manager. Care is provided by our experienced Registered and Assistant Nurses, while trained volunteers assist in non-clinical support. Our Nurse Practitioner also supports the nursing and medical teams. Psychosocial and practical support is provided by the Ipswich Hospice Social Worker.

## Visitors

Our visiting hours are unrestricted, giving you valuable time to spend with your loved ones. Facilities such as the dedicated family room containing CDs, DVDs, toys and tea and coffee will allow you to enjoy your time together comfortably. Additionally, day leave can be arranged with permission from your medical team.

For guests who are nearing end of life, extra beds are available for family members to stay overnight.

## Support Services

A team of trained, dedicated staff and volunteers provide practical, emotional and spiritual support to people who are about to or who have lost a loved one, through death. A range of services including individual and group counselling services are available for people of all ages, including children.

## How to Access Ipswich Hospice Inpatient Services

Ipswich Hospice accepts referrals from health professionals, relatives, friends or by the person needing care themselves. Referrals can be made via our website ([www.ipswichhospice.org.au](http://www.ipswichhospice.org.au)) or by calling Ipswich Hospice Nurse Unit Manager on (07) 3812 0063.

After receiving your referral, we will contact your health providers (GP etc.) for more information.

## Costs of Care

Admission to Ipswich Hospice is like being cared for at home. This means that whilst most care costs are covered, you will incur costs for medications, continence aids, Allied Health assessments and any specialist equipment that you may need.

Ipswich Hospice needs and encourages financial assistance from guests and families accessing our services. We appreciate regular donations, if possible, during the guest's stay with us.